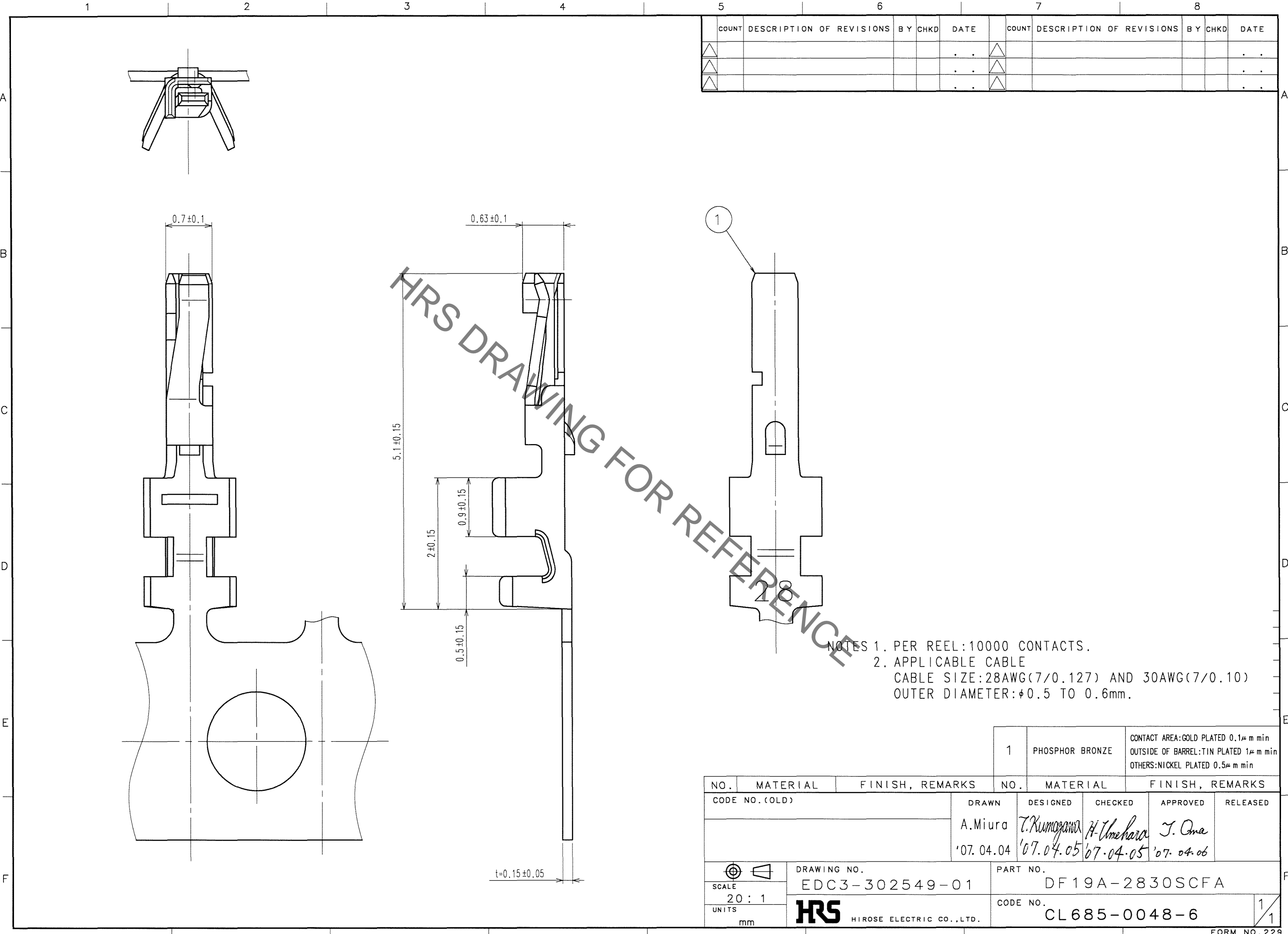


Jun.1.2020 Copyright 2020 HIROSE ELECTRIC CO., LTD. All Rights Reserved.
In case of consideration for using Automotive equipment / device which demand high reliability, kindly contact our sales window correspondents.



COUNT	DESCRIPTION OF REVISIONS	BY	CHKD	DATE	COUNT	DESCRIPTION OF REVISIONS	BY	CHKD	DATE
△				..	△				..
△				..	△				..
△				..	△				..

HRS DRAWING FOR REFERENCE

NOTES 1. PER REEL: 10000 CONTACTS.
2. APPLICABLE CABLE
CABLE SIZE: 28AWG(7/0.127) AND 30AWG(7/0.10)
OUTER DIAMETER: $\phi 0.5$ TO 0.6 mm.

TO

NO. 1	MATERIAL PHOSPHOR BRONZE	FINISH, REMARKS CONTACT AREA: GOLD PLATED 0.1 μ m min OUTSIDE OF BARREL: TIN PLATED 1 μ m min OTHERS: NICKEL PLATED 0.5 μ m min
NO.	MATERIAL	FINISH, REMARKS
CODE NO. (OLD)	DRAWN A.Miura	DESIGNED T.Kumogawa
	'07.04.04	'07.04.05
		H. Umehara
		J. Oma
		'07.04.06
SCALE 20:1	DRAWING NO. EDC3-302549-01	PART NO. DF19A-2830SCFA
UNITS mm	HRS HIROSE ELECTRIC CO., LTD.	CODE NO. CL685-0048-6