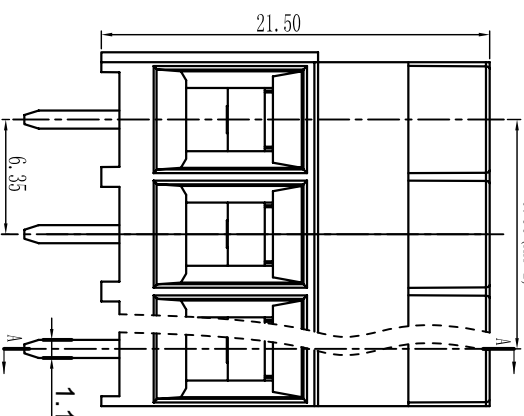
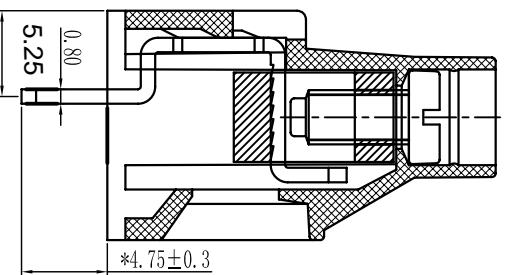
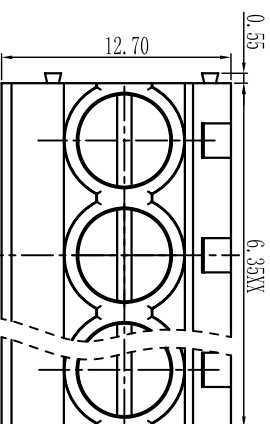
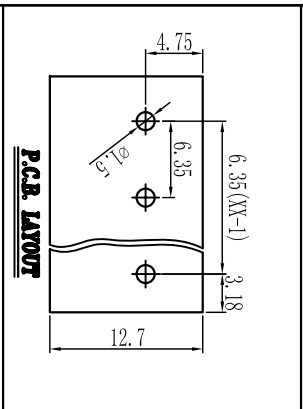




Cixi Dibo Electronics Co., LTD

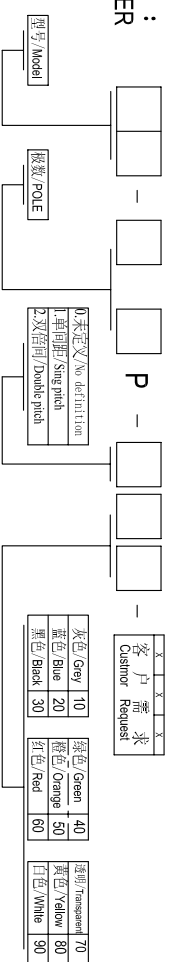
产品规格书
product specification



TOLERANCES EXCEPT AS NOTED

SECTION A-A

订购方式：
HOW TO ORDER



电气性能/Electrical
 参考标准/Standard: UL IEC
 额定电压/Rated voltage: 300V 250V
 额定电流/Rated current: 30A 35A
 接触电阻/Contact resistance: 20mΩ
 使用线径/Wire range: 26-10AWG 4.0mm²
 耐电压/Withstanding voltage: AC2000V/1Min
 绝缘电阻/Insulation resistance: 500MΩ/DC500V

机械性能/Mechanical
 温度范围/Temp.Range: -40°C+105°C
 扭矩/Torque: 0.5Nm (4.5lb`in)
 剥线长度/Strip length: 6-7mm

尺寸/Dimensions
 间距/Pitch: 6.35mm
 板数/Poles: 2P-24P

材质及电镀/Material
 塑件/Housing: P166, U194V-0
 螺丝/Screws: M3.0, steel Zinc plated
 方块/Cage: Brass, Ni plated
 焊脚/Pin header: Brass, Snle plated

	Linear dimension	fillet	chamfer	短角	短角边	倒角	公差	公差	公差	公差	公差	公差
variable range	6 to 6	6 to 30	6 to 120	6 to 480	6 to 480	6 to 480	±0.1	±0.2	±0.3	±0.5	±0.9	±0.2
tolerance	6 to 30	30 to 120	120 to 480	480 to 120	120 to 480	480 to 120	±0.1	±0.2	±0.3	±0.5	±0.9	±0.2

单位/UNITS	mm	尺寸/SIZE	A4	比例/SCALE	比例	名称/NAME	DB910-6.35
Cixi Dibo Electronics Co., LTD							
第一视角/THIRD ANGLE PROJECTION							