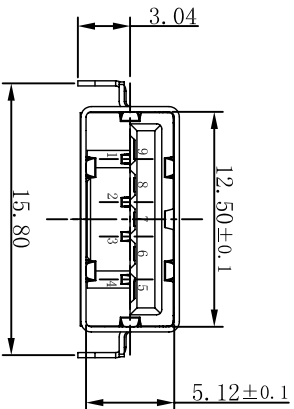
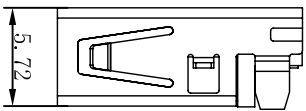
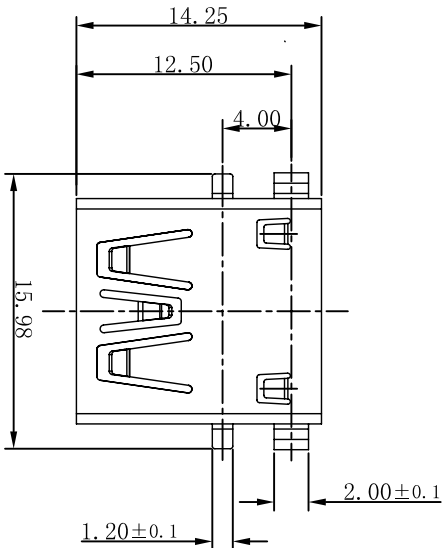
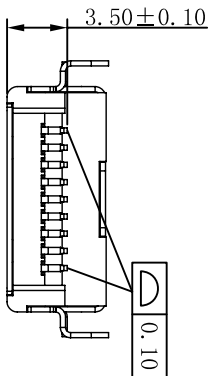
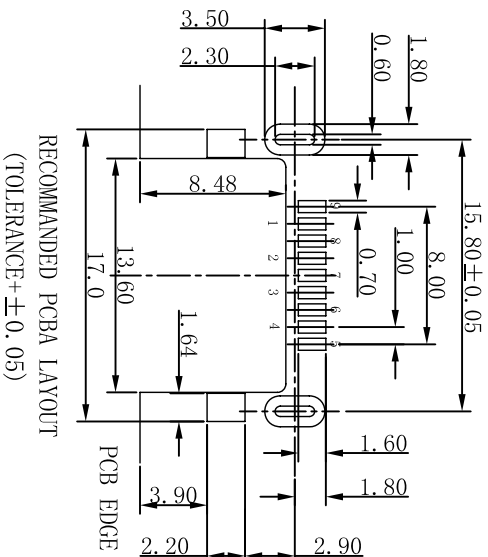
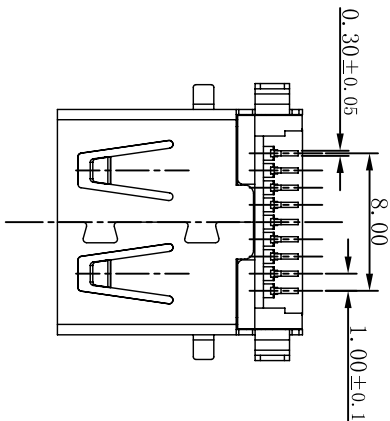


MAPX	MODIFICATION	DATE
------	--------------	------



Pin NUMBER	SIGNAL NAME
1	VIBUS
2	D-
3	D+
4	GND
5	StdA_SSRX-
6	StdA_SSRX+
7	GND_DRAIN
8	StdA_SSTX-
9	StdA_SSTX+
Shell	Shield



- NOTE:
- MATERIAL:
    - INSULATOR: LCP UL 94V-0
    - CONTACT: BRONZE (T=0.20mm)
    - SHELL: BRASS (T=0.30mm)
  - ELECTRICAL CHARACTERISTICS:
    - CONTACT RESISTANCE: 30mΩ MAXIMUM
    - CONTACT CURRENT RATING: 1.5A
    - DIELECTRIC WITHSTANDING VOLTAGE: 500 V R.M.S.
    - INSULATION RESISTANCE: 1000 MEGOHMS MIN
    - OPERATING TEMPERATURE: -40° C ~ 85° C
  - MECHANICAL CHARACTERISTICS:
    - MATING FORCE: 3.57kg MAX
    - UNMATED FORCE: 1.02kg MIN
    - DURABILITY: MANDATORY: 5,000 CYCLES
  - PLATING:
    - TERMINAL:
      - 50μ" MIN NICKEL ALL OVER
      - 100μ" MIN Tin ON SOLDER AREA
      - (130)μ" Au ON CONTACT AREA
    - SHELL: 100μ" MIN. NICKEL ALL OVER

# 深圳市精拓金电子有限公司

产品图 PRODUCT CHART DWG 公差一览表 TOLERANCE UNLESS OTHERWISE		单位 UNITS MM	制图 DRAWING Gavin	制图料号 PRODUCT PART NO. USR3_0 AP 沉板
±5° ±2° ±1° ±0.5°	X X X XXX	X X XX XXX	审核 CHECKD 郭治富	产品名称 PRODUCT NO. 成品图(无卷边)
比例 SCALE 1:1	日期 DATE 2016-09-09	核准 APPD 黄国荣	角法 VIEW 版本 VER AD	

1 2 3 4 7 8 9 10

由 Autodesk 教育版产品制作