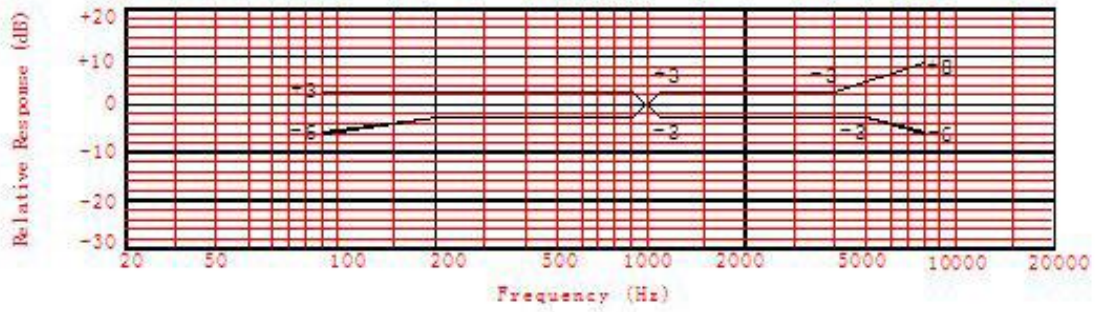


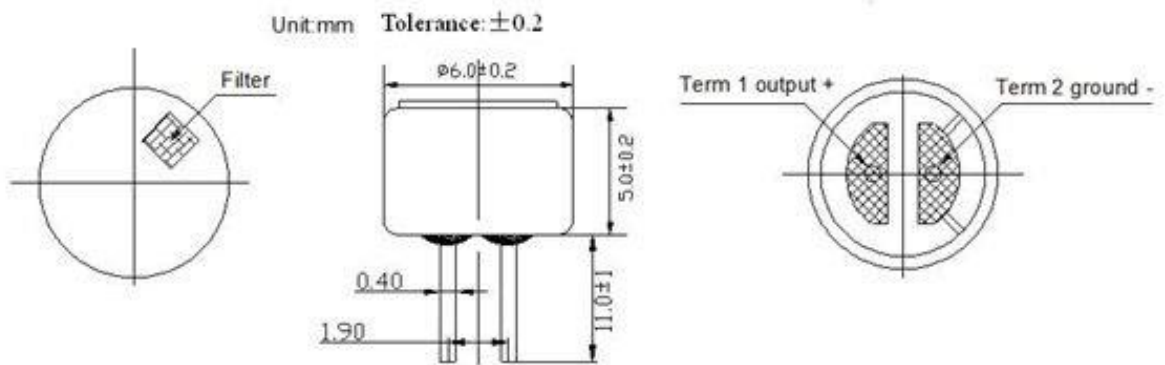
GMI6050P 全指向驻积体咪头

详情说明

全指向性

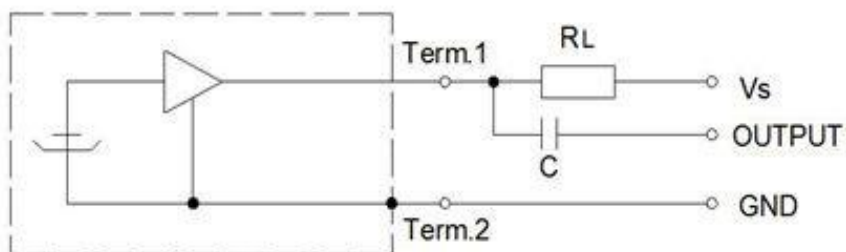


D. APPEARANCE DRAWING



E. MEASUREMENT CIRCUIT

Vs:Source Voltage4.5V R_L:Load Resistance2.2K Ω



No.	Item	Symbol	Unit	Specification	Condition
1	Directivity			Omnidirectional	
2	Sensitivity	S	dB	-30~-44±3	f=1KHz, 1Pa 0dB=1V/Pa
3	Standard operating voltage	Vs	V	4.5	
4	Output impedance	Zout	KΩ	≦2.2	f=1KHz, 1Pa
5	Frequency		Hz	100-10,000	
6	Max operating voltage		V.	10	
7	Sensitivity reduction	ΔS-Vs	dB	-3	f=1KHz, 1Pa Vs=1.5 VDC to 2VDC
8	Max. current consumption	IDSS	mA	≦0.5	
9	Signal to noise ratio	S/N	dB	≧58	f=1KHz, P in=1Pa
10	Max input sound level	SPL	dB	110	
11	Operation temp.		℃	-20 ~+70	
12	Storage temp.		℃	-30 ~+80	
13	Dimension		mm	φ 6.0 x H5.0	See appearance drawing
14	Terminal			Terminal	See appearance drawing

We use "Pascal(Pa)" indication of sensitivity as per the recommendation of I.E.C.(International Electro technical Commission)

The Sensitivity of "Pa" will increase 20dB comparing with "ubar" indication

Example: -60dB(0dB=1V/u bar) =-40dB(1V/Pa)