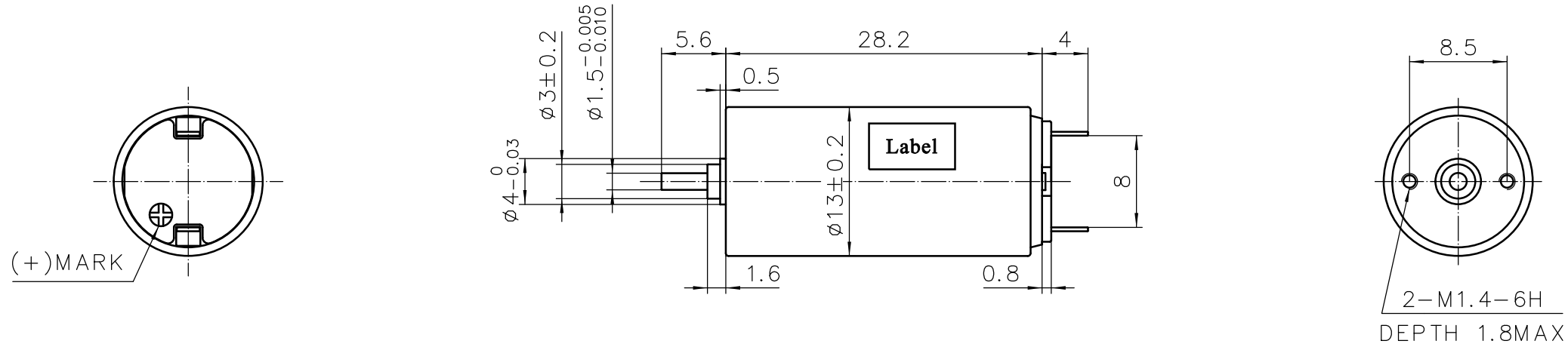


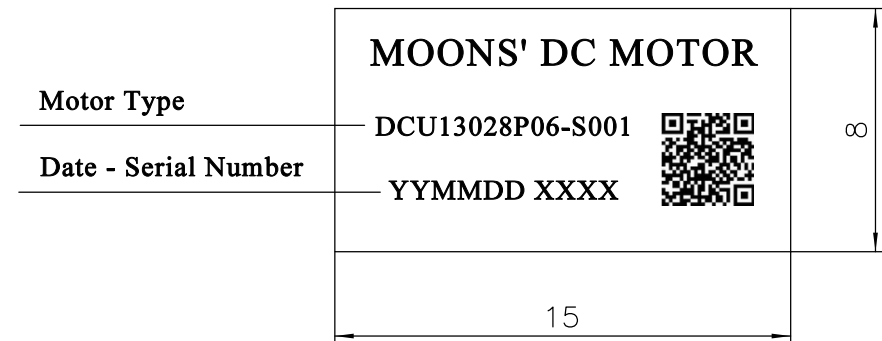
4611185000024



规格/Specifications

额定电压/Nominal voltage	6		V
空载转速/No load speed	9700	±10%	rpm
空载电流/No load current	16.7	±50%	mA
额定转速/Nominal speed	6110		rpm
额定转矩/Nominal torque	3.36		mNm
额定电流/Nominal current	0.591		A
堵转转矩/Stall torque	9.18		mNm
堵转电流/Stall current	1.57		A
最大效率/Maximun efficiency	80		%
换向器片数/Number of commutator segments	5		
端电阻/Terminal resistance	3.8	±8%	Ω
端电感/Terminal inductance	0.090		mH
转矩常数/Torque constant	5.86	±8%	mNm/A
转速常数/Speed constant	1630	±8%	rpm/V
速度/转矩常数/Speed/torque gradient	1066	±20%	rpm/mNm
机械时间常数/Mechanical time constant	4.72		ms
转子惯量/Rotor inertia	0.423	±10%	gcm ²
电机质量/Weight of motor	20.4		g
电刷类型/Brush type	稀有金属电刷/Precious Metal Brushes		

铭牌/Label Detail



二维码内包含电机型号和日期

G		
F		
E		
D		
C		
B		
A	原始版本 Original revision	2017.07.30
REV.	版本记录 REVISION RECORD	DATE

Unit: mm
 第一角画法
 FIRST ANGLE METHOD
 未注线性与角度尺寸公差
 Tolerances for linear and angular dimensions without individual tolerance indications
 GB/T 1804-m eqv ISO 2768-1:m
 未注形状与位置尺寸公差
 Geometrical tolerance for features without individual tolerance indications
 GB/T 1184-K eqv ISO 2768-2:K

批准 Approve		
标准化 Standard		
工艺 Technology		
审核 Check		
设计 Design		

MOONS' Coreless Brushed DC Motor
 Shanghai Moons' Electric Co., Ltd.
 This document is released for information only. Its reproduction in whole or in part or its dissemination to third parties is prohibited. All trademarks and registered trademarks appearing on this document are the property of their respective owners.