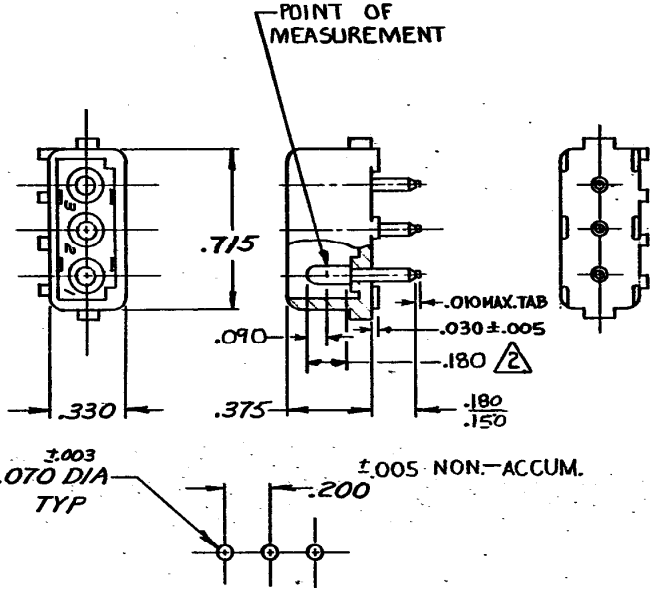


WAS P-72-6198

DIMENSIONS IN INCHES, DO NOT SCALE PRINT.



1. PARTS COMPLY WITH TE SOLDERABILITY SPEC. NO. 109-11-3

2 CONTACT IS PLATED OVERALL WITH .000050 NICKEL, THEN .000030 GOLD OVER CONTACT LENGTH INDICATED AND TIN PLATED ON SOLDER TAIL END.

SUPERSEDED BY
1586514-2

350210-1 NYLON - NATURAL COPPER ALLOY - PRE-TIN

ASSEMBLY NO. HSG. MATL & COLOR PIN MATL & FINISH

CUSTOMER COPY
REFERENCE ONLY

T3	REVISED PER ECR-18-008156	JB	DZ	19 JUN 2018
T2	REVISED PER ECR-13-008342	AV	RP	12 NOV 2013
T1	REVISED PER ECO-11-005294	RK	HMR	07 APR 11
LTR	REVISION RECORD	DR	CHK	DATE

350210

QTY	DESCRIPTION

DR 4-12-73 9. Edwards	MATERIAL AND FINISH SEE TABLE		TE Connectivity CLASS .084 DIA. PIN	
CHK 1/13/73 D. Pelton/duffy	WIRE - RANGE - INSULATION -H- 1 -H-		TYPE PIN HEADER	
DE Thomble 4-13-73	TOLERANCE EXCEPT AS NOTED ±.015 ± 1° 0'	SCALE -H-	LOC CM B	NO 350210
APP Thomble 4-13-73	NAME 3 CIRCUIT MATE-N-LOK P.C. BOARD HEADER			

PRINTED IN U.S.A.