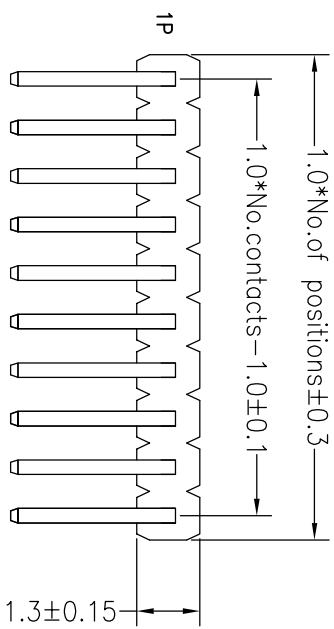


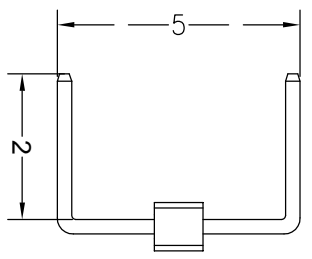
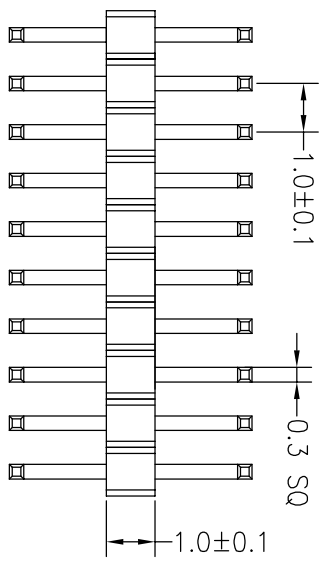
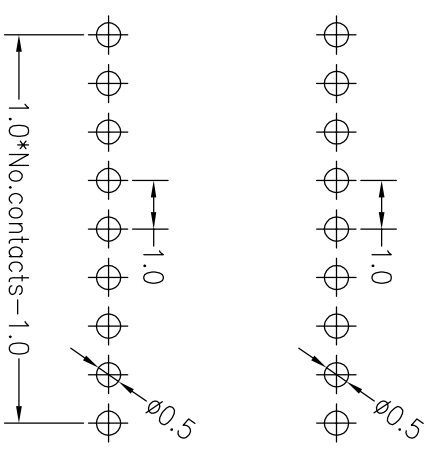
RoHS

SPECIFICATIONS

Rated Current:0.75AMP
 Contact Resistance:30mΩ Max
 Withstand Voltage:500V AC/DC
 Insulation Resistance:1000MΩ Min
 Operation Temperature:-40°c to +105°c
 Contact Material:Brass
 Contact Plating:Au Over Ni
 Insulator Material:Polyester(UL94V-0)
 Standard: PA6T
 Max.Processing Temp: 230°C for 30-60 seconds
 (260°C for 10 seconds)



Recommended P.C.B Layout(Top Side)
 (PCB BOARD TOLERANCE±0.05)



深圳市连盛精密连接器有限公司

| OPERATION | | DRAW | | SCALE | | FIT | | PART NO. | |
|-----------|-------|---------|-------|---------|-----|-------|-----|----------|--|
| X.X | ±0.30 | X.X | ±0.30 | UNIT | mm | PROJ. | 1/1 | PH-00673 | |
| X.XX | ±0.20 | CHECK | | SIZE | A4 | | | | |
| X.XXX | ±0.10 | | | SHEET | 1/1 | | | | |
| Angle | ±3° | APPROVE | | | | | | | |
| DIM | TOL | | | | | | | | |
| OPERATION | | DRAW | | SCALE | | FIT | | PART NO. | |
| X.X | | X.X | | UNIT | | mm | | PH-00673 | |
| X.XX | | X.XX | | SIZE | | A4 | | | |
| X.XXX | | X.XXX | | SHEET | | 1/1 | | | |
| Angle | | ±3° | | APPROVE | | | | | |
| DIM | | TOL | | | | | | | |
| OPERATION | | DRAW | | SCALE | | FIT | | PART NO. | |
| X.X | | X.X | | UNIT | | mm | | PH-00673 | |
| X.XX | | X.XX | | SIZE | | A4 | | | |
| X.XXX | | X.XXX | | SHEET | | 1/1 | | | |
| Angle | | ±3° | | APPROVE | | | | | |
| DIM | | TOL | | | | | | | |

| REV | DATE | MODIFICATION DESCRIPTION | CHANGE |
|-----|------------|--------------------------|--------|
| A0 | 2012.03.28 | NEW DRAWING | |
| 1 | | | |