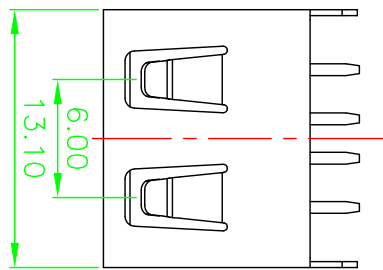


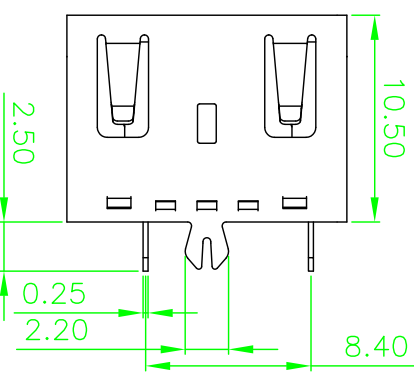
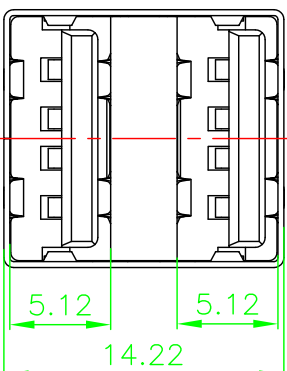
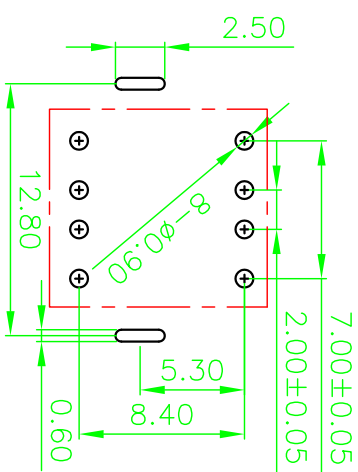
RoHS

Parts Drawing

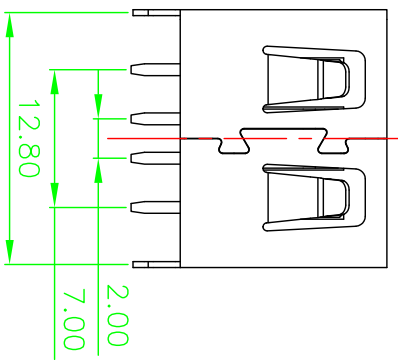
REVISIONS		
SYM	EGR No.	MODIFICATION



RECOMMENDED P.C.B PATTERN LAY OUT



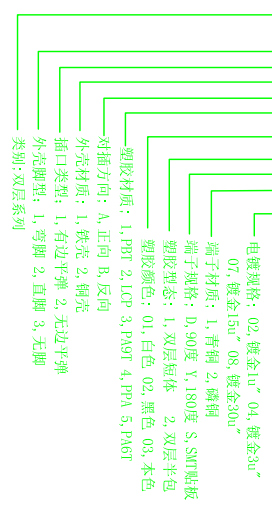
1	907-222A1021Y102	5
2		6
3		7
4		8



Note:

- Material:
 - Housing: High temperature thermoplastic with/black G/F, UL94V-0
 - Contact: copper alloy, t=0.25mm
 - Shell: copper/Ferroalloy alloy, t=0.30mm
- Specification:
 - Current rating: 1.5A Max.
 - Dielectric withstanding voltage: 100 V(ac) for 1 min.
 - Contact resistance: 30 mΩ Max.
 - Insulation resistance: 100 MΩ Min.
 - Total mating force: 3.57 Kgf Max.
 - Total unmating force: 1.0 Kgf Min.
- Finish:
 - Contact: Plated Gold in Mating Area; Tin On Solder Tails
 - Shell: Nickel Plating
- Environmental:
 - Temperature range: -55°C~85°C

PART ON: 907-222AXXX1Y1XX



深圳市精拓金电子有限公司

DRAWN	TITLE	PART NO.	SCALE	SHEET	SIZE	REV.
CHECKED	USB AF 10.5短体双层直脚	SEE PART ON	1:1	1 OF 1	A4	X1
APPROVED	无边	DRAWING NO.				
		R907222A1021Y102				

3rd ANGLE PROJECTION	UNIT	TOLERANCE
	mm	.XXX±.10, .XX±.25, .X±.38, ANG45°

1 2 3 4 5 A B C D E