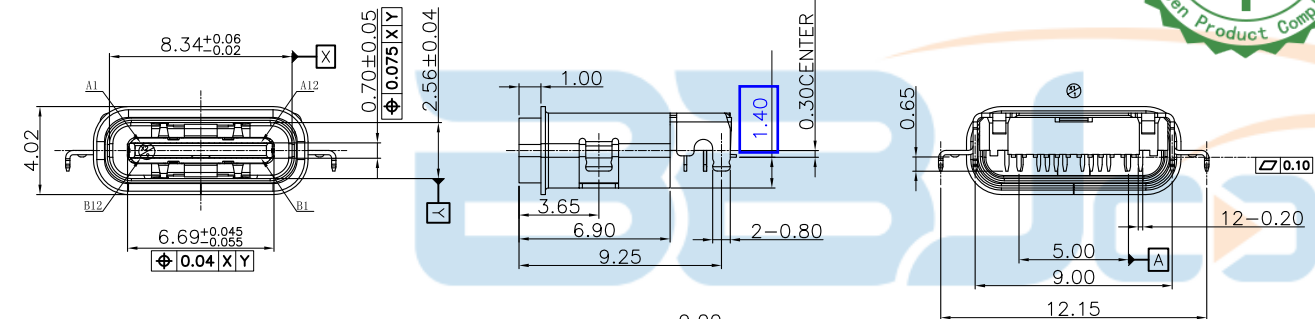
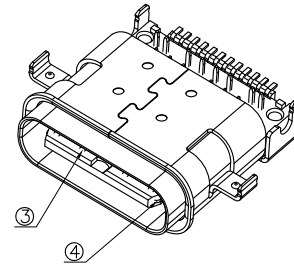
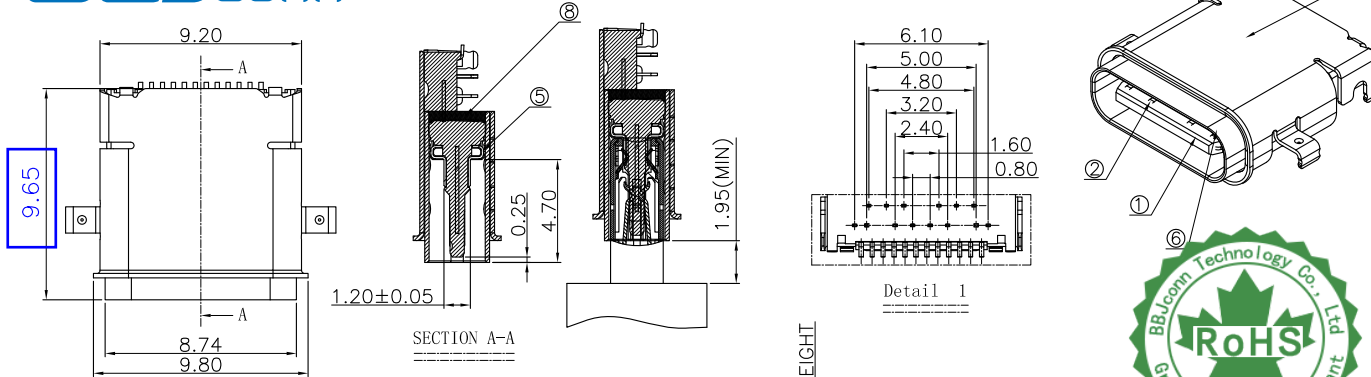


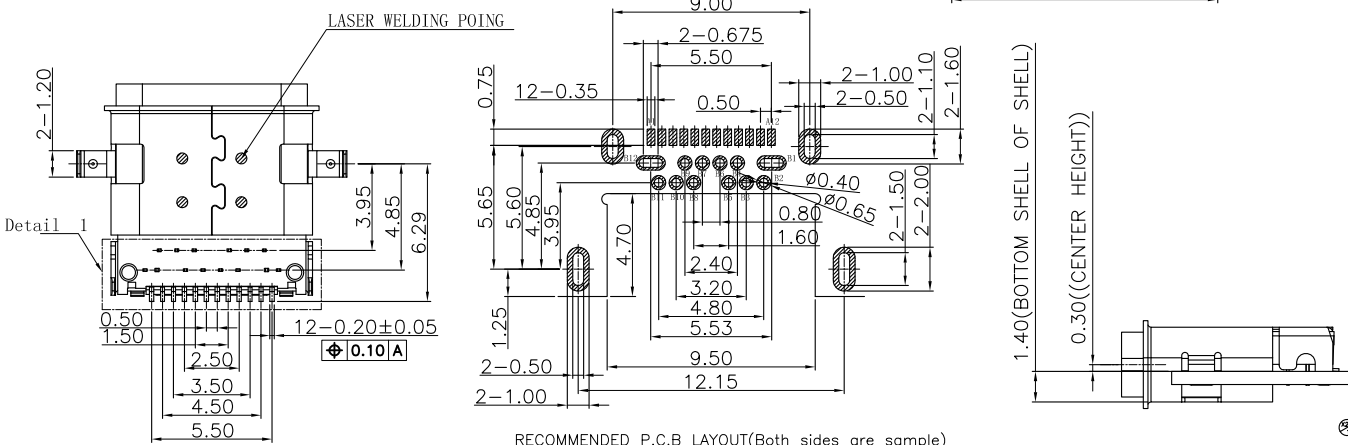


CUSTOMER DRAWING

Pin	Signal Name	Mating Sequence	Pin	Signal Name	Mating Sequence
A1	GND	First	B12	GND	First
A2	SSTXp1	Second	B11	SSRXp1	Second
A3	SSTXn1	First	B10	SSRXn1	Second
A4	V _{bus}	First	B9	V _{bus}	First
A5	CC1	Second	B8	SBU2	Second
A6	Dp1	Second	B7	Dn2	Second
A7	Dn1	Second	B6	Dp2	Second
A8	SBU1	Second	B5	CC2	Second
A9	V _{bus}	First	B4	V _{bus}	First
A10	SSRXn2	Second	B3	SSTXn2	Second
A11	SSRXp2	Second	B2	SSTXp2	Second
A12	GND	First	B1	GND	First
SHELL	GND		SHELL	GND	



- NOTES:
 1. MATERIAL: SEE "TABLE 1";
 2. FINISH: SEE "TABLE 1";
 3. ELECTRICAL :
 3-1.CONTACT CURRENT RATING :
 5A(VBUS PIN 1.5A/PIN),
 5A(GND PIN 1.25A/PIN MAX),0.25A/PIN(OTHER PIN).
 3-2.INSULATION RESISTANCE :
 100 MEGAOHMS MIN. AT 250VDC.
 3-3.DIELECTRIC WITHSTANDING VOLTAGE :
 100VAC MIN.
 3-4.LOW LEVEL CONTACT RESISTANCE :
 INITIAL 40mΩ MAX.
 AFTER 50mΩ MAX.
 4.MECHANICAL CHARACTERISTICS :
 4-1. MATING FORCE: 5~20N.;
 4-2. UNMATING FORCE: 8~20N(INITIAL),6~20N(AFTER 10000 CYCLES);
 4-3.DURABILITY : 10,000 MATING CYCLES.
 4-4.OPERATING TEMPERATURE :-40°C TO +80°C



RECOMMENDED P.C.B LAYOUT(Both sides are sample)
Tolerance:±0.05,Thickness=0.60mm

TABLE 1:

NO.	PART NAME	QTY	MATERIAL	DESCRIPTION	REMARK
⑧	GLUE WATER	1	EPOXY	BLACK;	
⑦	Shell-2	1	Stainless steel	NI PLATING;	T=0.20mm
⑥	Shell-1	1	Stainless steel	NI PLATING;	T=0.20mm
⑤	GND PLATE	1	Stainless steel	NI PLATING;	T=0.10mm
④	MID PLATE	1	Stainless steel		T=0.15mm
③	Terminal-B	12	铜镍硅合金	Au15u* PLATING;	T=0.12mm
②	Terminal-A	12	铜镍硅合金	Au15u* PLATING;	T=0.12mm
①	Housing	1	HIGH TEMP	Black	

UNLESS OTHERWISE,
 GENERAL TOLERANCE:
 X.xxx ±0.10
 X.xx ±0.20
 X.x ±0.30
 X. ±0.38
 ANGULAR:
 X.xx ±1°
 X.x ±3°
 X. ±5°

深圳市步步精科技有限公司

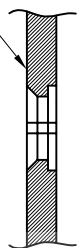
TITLE: TYPE-C 24P 3.1 母座沉板1.4 端子前插后贴四脚插L=9.65 IPX7 CH=0.3	PART.NO: UC.01.32-1J-0002
THIRD ANGLE PROJECTION	UNIT: mm
SCALE: 1:1	SIZE: A4
SHEET: 1/2	

X2	⑧ 塑胶原料LCP改PM46, ⑨ 产品头部不漏钢片。	DESIGN	HMY	
X1	随工程图上升版次	CHECK	LYX	0395-1
X	NEW DRAWING	APPROVAL	LJP	
ECN NO.	REV.	DESCRIPTION	DATE	CHANGE



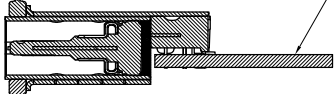
建议密封方式

机壳面板

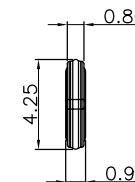
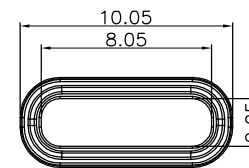


密封圈

PCB板



前后组装方式



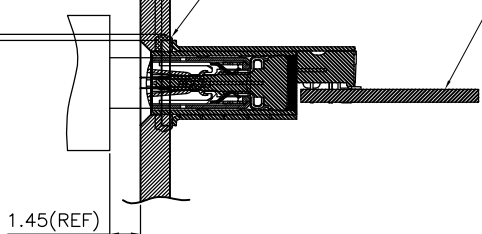
建议防水圈规格 (材质硅橡胶)

机壳面板对密封圈与缩量0.30Min
(建议压缩量为密封圈直径大小40-50%)

机壳面板对密封圈与缩量0.30Min
(建议压缩量为密封圈直径大小40-50%)

密封圈

PCB板



组装面板后公母头对插示意图



UNLESS OTHERWISE,
GENERAL TOLERANCE:

X.xxx ±0.10
X.xx ±0.20
X.x ±0.30
X. ±0.38

ANGULAR:

X.xx ±1'
X.x ±3'
X. ±5'

深圳市步步精科技有限公司

TITLE:
TYPE-C 24P 3.1 母座沉板1.4
端子前插后贴四脚插L=9.65 1PX7 CH=0.3

PART.NO:
UC.01.32-1J-0002

THIRD ANGLE PROJECTION

UNIT:
mm

SCALE:
1:1

SIZE:
A4

SHEET:
2/2

ECN NO.	REV.	DESCRIPTION	DATE	CHANGE	APPROVAL	LJP
	X1	随工程图上升版次			DESIGN	HMY
	X	NEW DRAWING			CHECK	LYX
					APPROVAL	LJP

0395-1

