



SB1535L THRU SB15200L

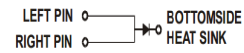
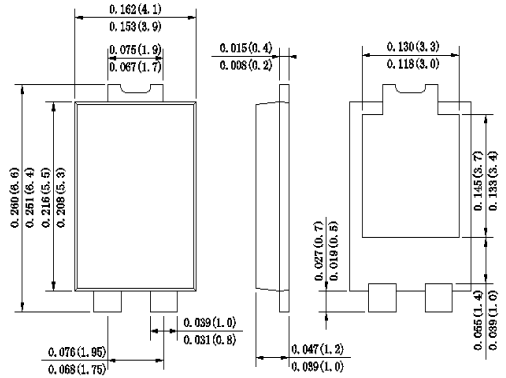
Reverse Voltage -35 to 200 Volts Forward Current -15.0 Ampere

SURFACE MOUNT SCHOTTKY BARRIER RECTIFIER

Features

- ◆ Schottky Barrier Chip
- ◆ High Thermal Reliability
- ◆ Patented Super Barrier Rectifier Technology
- ◆ High Forward Surge Capability
- ◆ Ultra Fow Power Loss,High Efficiency
- ◆ Excellent High temperature Stability
- ◆ Plastic material-UL flammability 94V-0

TO-277



Dimensions in inches and (millimeters)

Mechanical Data

- Case** : JEDEC TO-277 Molded plastic body
Terminals :Plated Leads Solderable per MIL-STD-750,Method 2026
Polarity : Polarity symbol marking on body
Mounting Position : Any
Weight : 0.003 ounce, 0.092 grams

Maximum Ratings And Electrical Characteristics

Ratings at 25°C ambient temperature unless otherwise specified.

Single phase half-wave 60Hz,resistive or inductive load,for capacitive load current derate by 20%.

Parameter	SYMBOLS	SB1535L	SB1545L	SB1550L	SB1560L	SB15100L	SB15150L	SB15200L	UNIT
		MDD SB1535L	MDD SB1545L	MDD SB1550L	MDD SB1560L	MDD SB15100L	MDD SB15150L	MDD SB15200L	
Maximum repetitive peak reverse voltage	V_{RRM}	35	45	50	60	100	150	200	V
RMS Reverse voltage	V_{RMS}	25	32	35	42	70	105	140	V
Maximum DC blocking voltage	V_{DC}	35	45	50	60	100	150	200	V
Average Rectified Output Current See Fig.1	$I_{(O)}$	15							A
Non-Repetitive Peak Forward Surge 8.3ms Single Half Sine-Wave Superimposed on rated load(JEDEC)	I_{FSM}	150							A
Forward Voltage Drop at 15A $T_A=25^\circ C$	V_F	0.50		0.55		0.70	0.80	0.85	V
Peak reverse curent at rated DC $T_A=25^\circ C$ blocking voltage (Note 1)	I_R	30			50				mA
Typical thermal resistance	$R_{\theta JC}$	3.0							$^\circ C/W$
Operating junction temperature range	T_J	-65 to +150							$^\circ C$
Storage temperature range	T_{STG}	-65 to +150							$^\circ C$

- Note:**1.Pulse test:300us pulse width,1% duty cycle.
 2.The rmal resistance from junction to case.
 3.The typical data above is for referenceonly.



SB1535L THRU SB15200L

Reverse Voltage - 35 to 200 Volts Forward Current -15.0 Ampere

Ratings And Characteristic Curves

FIG.1-FORWARD CURRENT DERATING CURVE

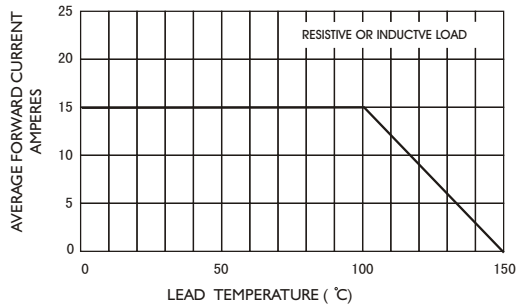


FIG.2-MAXIMUM NON-REPETITIVE PEAK FORWARD SURGE CURRENT

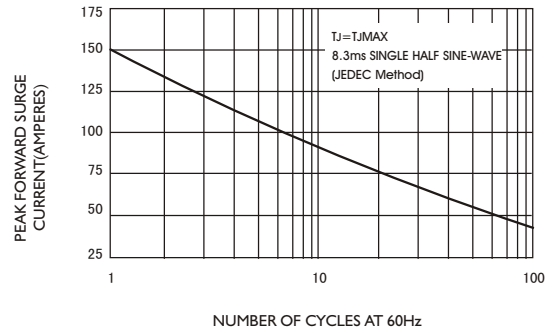


FIG.3-TYPICAL INSTANTANEOUS FORWARD CHARACTERISTICS

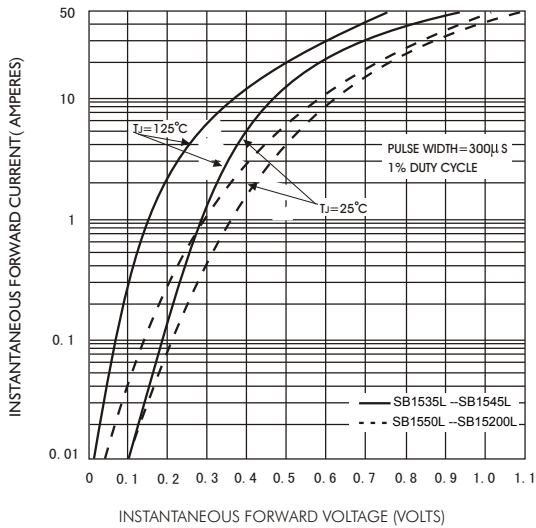


FIG.4-TYPICAL REVERSE CHARACTERISTICS

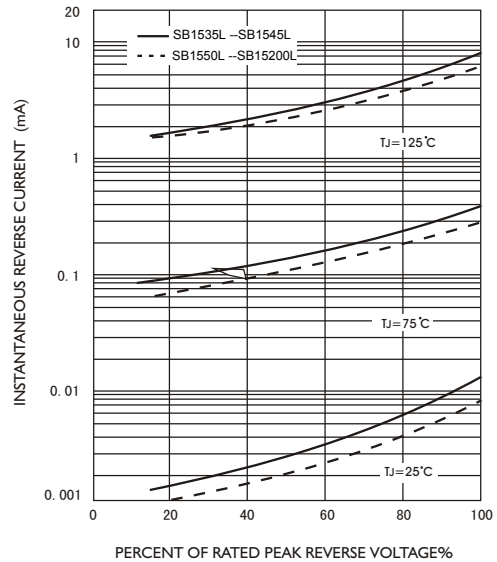


FIG.5-TYPICAL JUNCTION CAPACITANCE

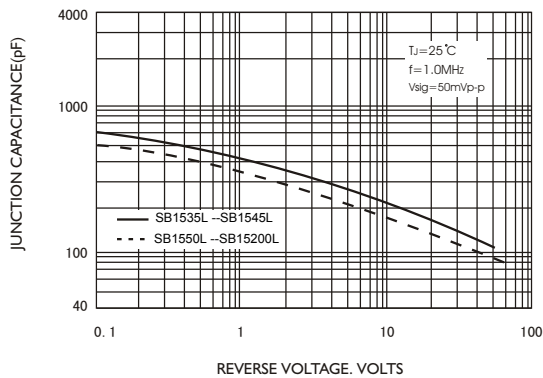
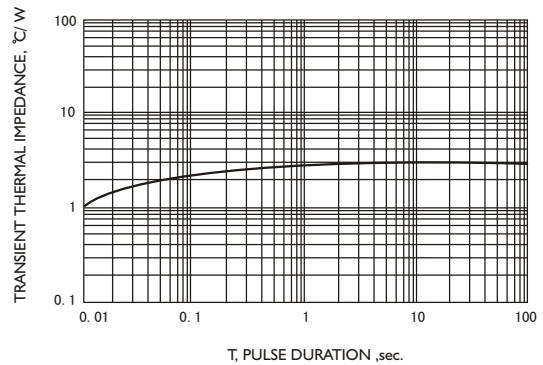


FIG.6-TYPICAL TRANSIENT THERMAL IMPEDANCE



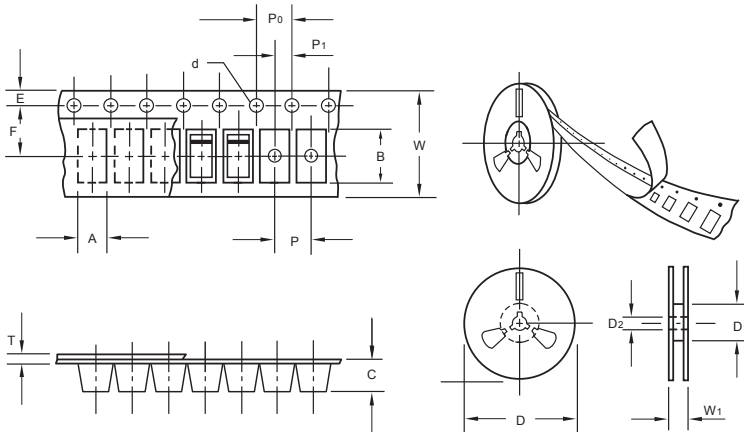
The curve above is for reference only.



SB1535L THRU SB15200L

Reverse Voltage - 35 to 200 Volts Forward Current -15.0 Ampere

Packing information



unit:mm

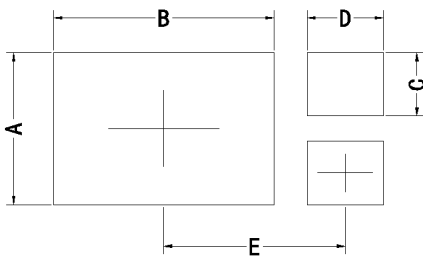
Item	Symbol	Tolerance	TO-277
Carrier width	A	0.1	4.45
Carrier length	B	0.1	7.0
Carrier depth	C	0.1	1.60
Sprocket hole	d	0.05	1.55
11" Reel outside diameter	D	2.0	280.00
11" Reel inner diameter	D ₁	min	50.0
Feed hole diameter	D ₂	0.5	13.00
Sprocket hole position	E	0.1	1.75
Punch hole position	F	0.1	7.50
Punch hole pitch	P	0.1	8.00
Sprocket hole pitch	P ₀	0.1	4.00
Embossment center	P ₁	0.1	2.00
Overall tape thickness	T	0.1	0.25
Tape width	W	0.3	12.00
Reel width	W ₁	1.0	12.30

Note: Devices are packed in accordance with EIA standard RS-481-A and specifications listed above.

Reel packing

PACKAGE	REEL SIZE	REEL (pcs)	COMPONENT SPACING (m/m)	BOX (pcs)	INNER BOX (m/m)	REEL DIA, (m/m)	CARTON SIZE (m/m)	CARTON (pcs)	APPROX. GROSS WEIGHT (kg)
TO-277	11"	3,000	5.0	6,000	340*340*43	280	380*380*380	48,000	9.0

Suggested Pad Layout



Symbol	Unit (mm)	Unit (inch)
A	3.60	0.142
B	5.35	0.211
C	1.50	0.059
D	1.85	0.073
E	4.30	0.169

Important Notice and Disclaimer

Microdiode Electronics (Jiangsu) reserves the right to make changes to this document and its products and specifications at any time without notice. Customers should obtain and confirm the latest product information and specifications before final design, purchase or use.

Microdiode Electronics (Jiangsu) makes no warranty, representation or guarantee regarding the suitability of its products for any particular purpose, nor does Microdiode Electronics (Jiangsu) assume any liability for application assistance or customer product design. Microdiode Electronics (Jiangsu) does not warrant or accept any liability with products which are purchased or used for any unintended or unauthorized application.

No license is granted by implication or otherwise under any intellectual property rights of Microdiode Electronics (Jiangsu).

Microdiode Electronics (Jiangsu) products are not authorized for use as critical components in life support devices or systems without express written approval of Microdiode Electronics (Jiangsu).