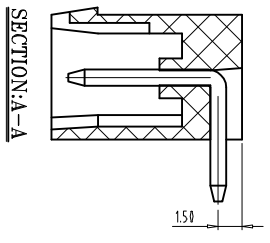
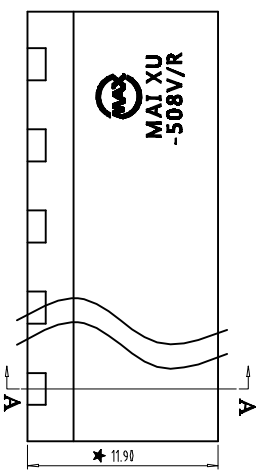
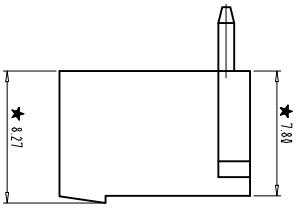
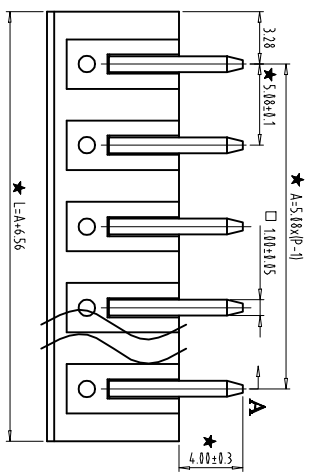
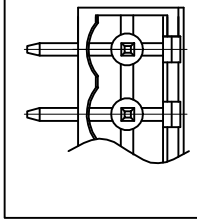
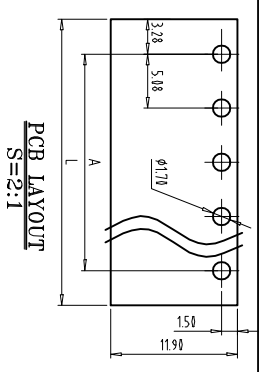


FILE: ZB02/

REVISIONS		DESCRIPTION	DATE	APPROVED
ZONE	REV			



- NOTES:
1. Rating 300V 15A ;
 2. Insulation Withstands Voltage: AC2000V/MIN
 3. Insulation Resistance: 500MΩ or more at DC500V
 4. Using Temperature Range: -40°C ~ +105°C
 5. "★" is the important dimension
 6. RoHS compliance

Total Pitch Tolerances		Nominal dimension range	
0	over	0	over
30	over	30	over
53	over	53	over
70	over	70	over
98	over	98	over
115	over	115	over
150	over	150	over
250	over	250	over
350	over	350	over
500	over	500	over
30	to	30	to
53	to	53	to
70	to	70	to
98	to	98	to
115	to	115	to
150	to	150	to
250	to	250	to
350	to	350	to
500	to	500	to
0.18	±0.20	±0.25	±0.35
0.44	±0.60	±0.70	±0.85
0.20	±0.25	±0.30	±0.35
0.44	±0.55	±0.70	±0.80
0.90	±0.90	0.2	0.3
0.3	0.3	0.2	0.3
0.3	0.2	0.3	0.5

THIRD ANGLE PROJECTION

CHKD: /

DRT: /

SIZE: FSCM NO. DWG NO.

DO NOT SCALE DRAWING SHEET

MAI XU 慈溪市迈旭电子有限公司
Mai Xu Cixi Mai Xu Electronics Co., Ltd.

MX2EDG-5.08RC

REV