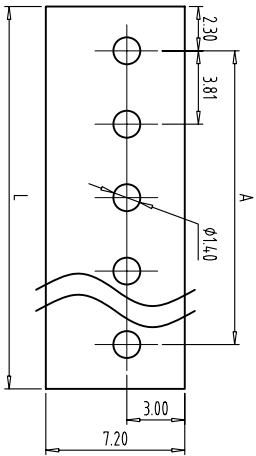
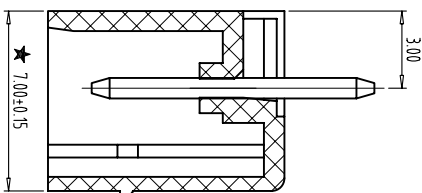
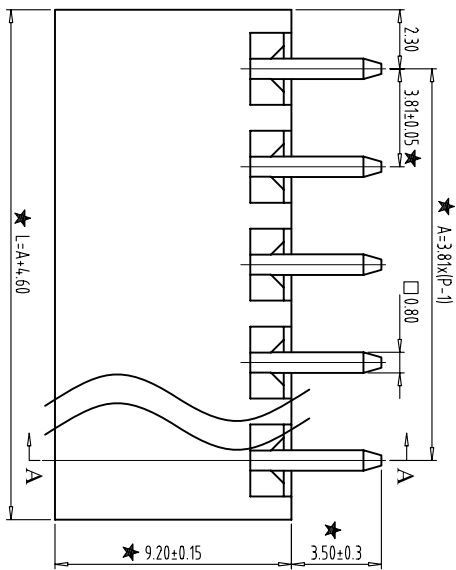
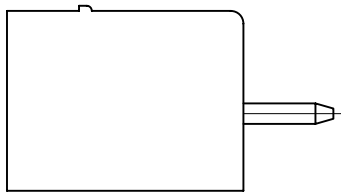
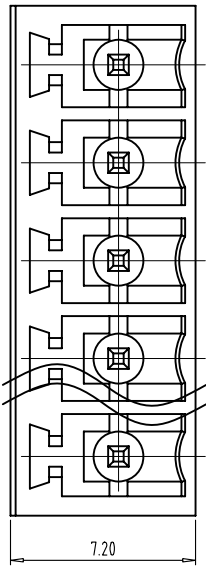


REVISIONS				
ZONE	REV	DESCRIPTION	DATE	APPROVED



PCB LAYOUT  
S=3:1



- NOTES:
- 1.Rating:300V 8A ,
  - 2.Insulation Withstands Voltage: AC2000V/MIN
  - 3.Insulation Resistance: 500MΩ or more at DC500V
  - 4.Using Temperature Range: -40℃--+105℃
  - 5." ★ " is the important dimension

Total Pitch Tolerances

Nominal dimension range

over	0	30	53	70	90	115	150	250	350	500	0	30	53	70	90	115	150	200	250	320	0	10	10	100	150
to	to	to	to	to	to	to	to	to	to	to	to	to	to	to	to	to	to	to	to	to	to	to	to	to	to
±0.18	±0.20	±0.25	±0.3	±0.35	±0.44	±0.60	±0.70	±0.85	±0.20	±0.25	±0.30	±0.35	±0.44	±0.55	±0.70	±0.80	±0.90	0.2	0.3	0.3	0.2	0.3	0.3	0.5	0.5

THIRD ANGLE PROJECTION



MX15EDGV-3.81-XXP-XC

慈溪市迈旭电子有限公司  
Cixi MaiXu Electronics Co., Ltd.

CHKD:	/	SIZE	FSQM NO.	DWG NO.	REV
DRFT:	/	MM (INCH)	DO NOT SCALE DRAWING	SHEET	