

ZV series

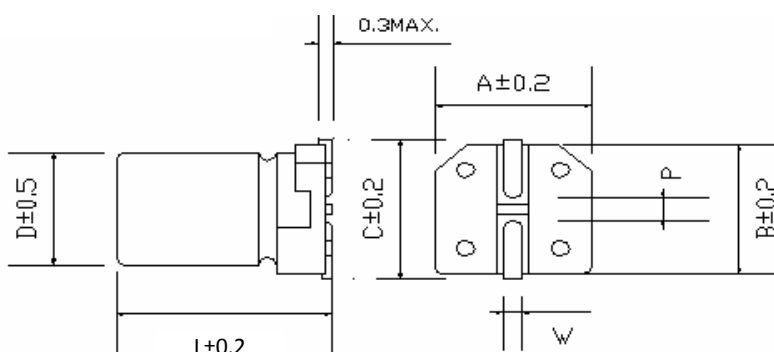
Part number	ZV221M6R3E055ETR	
Capacitance	220	μF
Voltage	6.3	VDC
Surge Voltage	7	VDC
Capacitance Tolerance (@120Hz, +20°C)	±20	%
Ripple current (max, @100KHz,+105°C)	195	mA
Dissipation factor (tanδ @120Hz, +20°C)	26	%
Leakage Current (max, @ +20°C)*	13.86	μA
Impedance (max. @ 100KHz,+20°C)	0.6	Ω
Size	6.3x5.5	mm
Operating temperature	-55 to 105	°C
Endurance	2000	h



*L.C. $I \leq 0.01CV$ or $3\mu A$ (C = CAP., V = W.V.)

After 2 minutes, whichever is greater measured with rated working voltage applied.

Test conditions	Endurance	Shelf Life
Duration time	2000h @ 105°C	1000h @ 105°C
Applied voltage	Rated DC working voltage, I_R	None
After test requirements (+20°C):		
Capacitance change	$\leq \pm 25\%$ of initial measured value	
Dissipation factor change	$\leq 200\%$ of the initial specified value	
Leakage current	\leq the initial specified value	
comment	Pre-treatment for measurements shall be conducted after application of DC working voltage for 30 min.	



D	L	A	B	C	W	P±0.2
6.3	5.5	6.6	6.6	7.2	0.5~0.8	2.2

Series	Cap	Tol.	Voltage	Case D	Case L	Type	Cust.
1_2	3_4_5	6	7_8_9	10	11_12_13	14_15_16	17_18_19_20
ZV	221	M	6R3	E	055	ETR	
	=220μF	=±20%	=6.3V	=6.3mm	=5.5mm	=tape and reel	no request
	...						