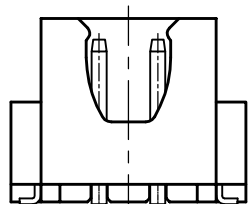
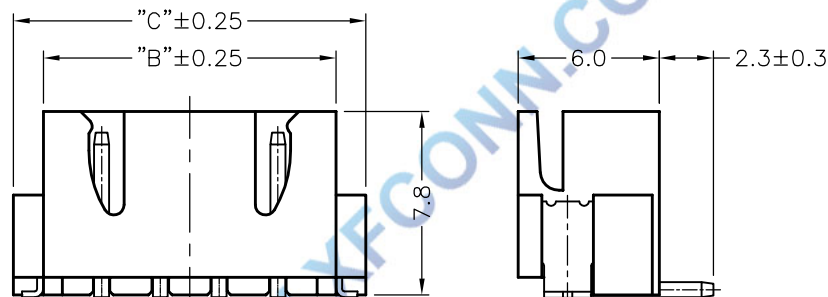
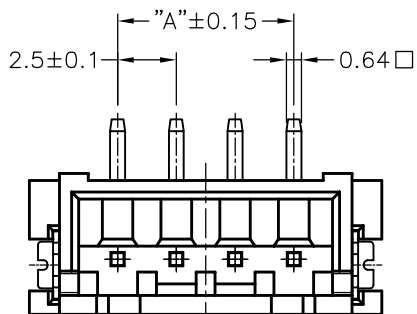


环保物料

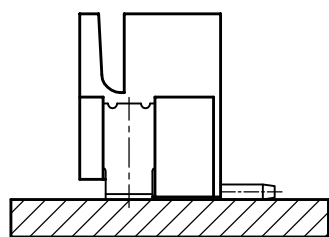
TEL: 0769-82001899

Poles	DIM.A	DIM.B	DIM.C
2	2.5	7.45	10.0
3	5.0	9.95	12.5
4	7.5	12.45	15.0
5	10.0	14.95	17.5
6	12.5	17.45	20.0
7	15.0	19.95	22.5
8	17.5	22.45	25.0
9	20.0	24.95	27.5
10	22.5	27.45	30.0
11	25.0	29.95	32.5
12	27.5	32.45	35.0
13	30.0	34.95	37.5
14	32.5	37.45	40.0
15	35.0	39.95	42.5
16	37.5	42.45	45.0



2P样式

3P~16P样式

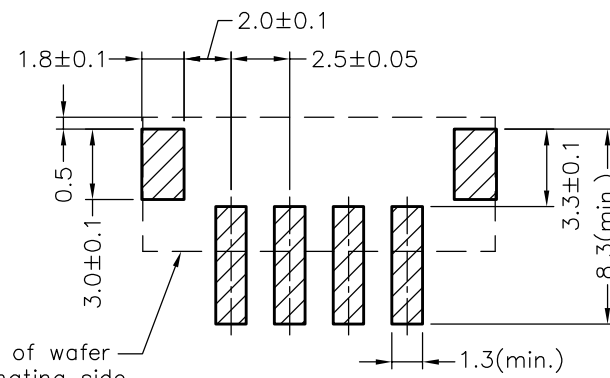


Assembly Layout

SPECIFICATIONS

Voltage rating: 250V AC, DC
 Current rating: 3A, AC, DC
 Withstanding Voltage: 1000V AC/minute
 Insulation resistance: 1000M min
 Temperature range: -25 °C ~ +85 °C
 Contact resistance: 10m max
WAFER
 Housing Material: PA9T UL 94V0
 Pin Material: Phosphor Bronze or Brass
 Contact Area Plating: Plated Tin or Plated Gold
 Mates with :P2501 series Housing
 Poles: 02-16P
 Part No.: M2501VS-xx-9T-R

R=卷装 无=管装
 Pin位数



End face of wafer on the mating side

P.C.B LAYOUT

				TOLERANCE UNLESS OTHERWISE		DRAWN	CK tan	XFCN 兴飞连接器有限公司		SHEET	1/1
				X.	±0.30	X°	±5°	CHKD	CONNECTORS XFCN CONNECTORS CO., LTD.	DATE	2010. 4. 12
				.X	±0.20	.X°	±2°	APPD	PRODUCT NAME	UNITS	mm
				.XX	±0.08	.XX°	±1°		2.50mm Crimp Style Connectors	SCALE	1:1
AO				.XXX	±0.03	.XXX°	±0.5°	VIEW	PART. NO.	DWG. NO.	009
VER	MODIFICATION	DRAW	DATE					M2501VS-xx-9T			