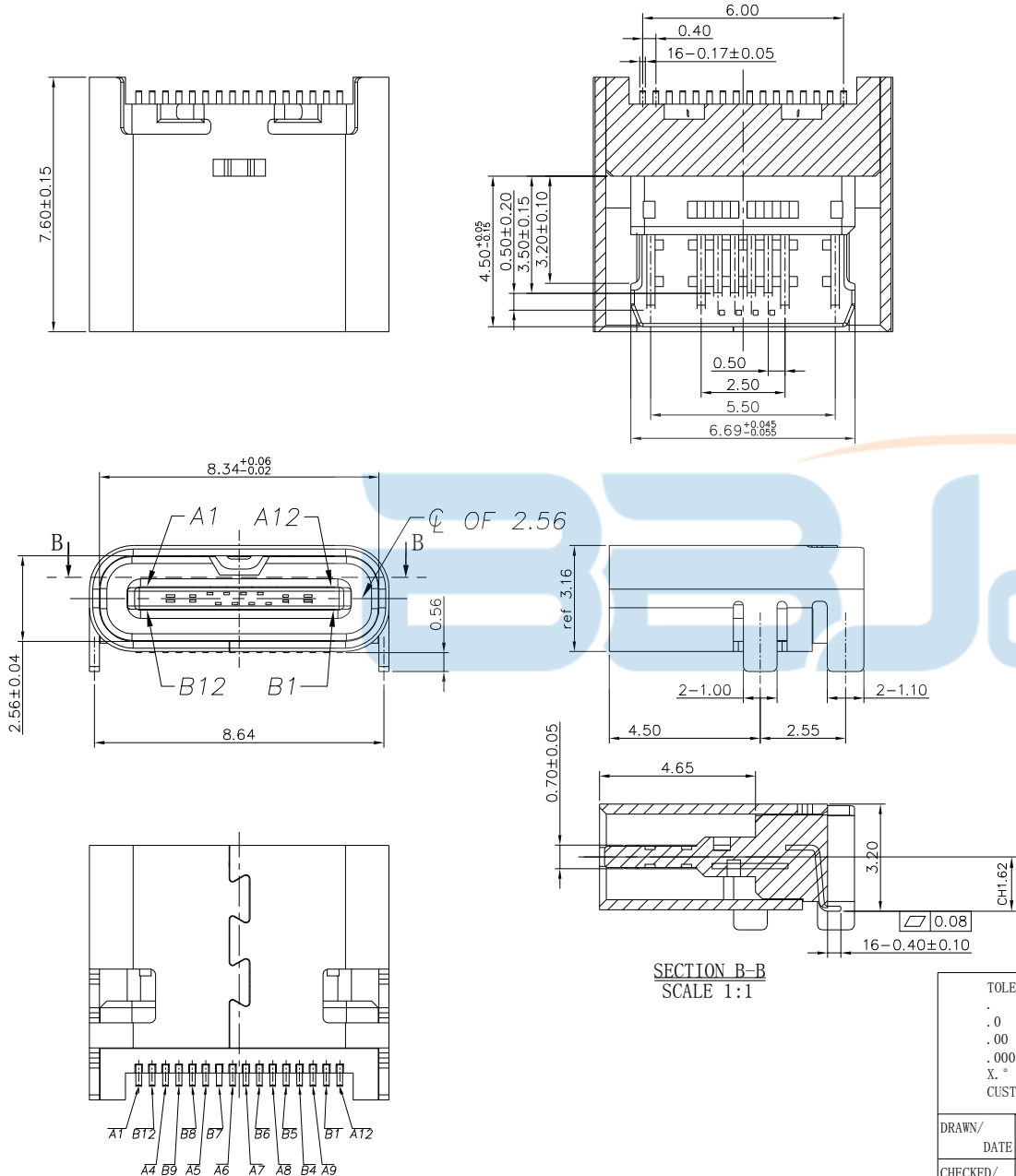




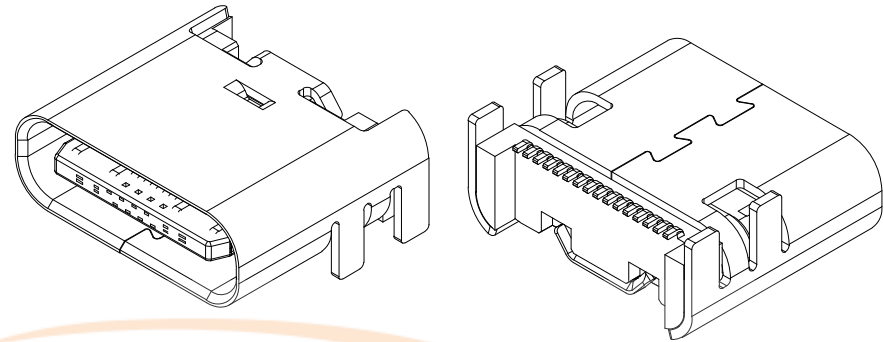
NOTE:

- 1.MATERIAL SPECIFICATION:
 - 1.HOUSING: LCP/PA46,UL94 V-0.
 - 2.CONTACTS: C2680/C5191
 - 3.SHELL: SUS304/SUS201
- 2.PLATING SPECIFICATION:
 - 2-1.CONTACTS:
 - Ni 50u" MIN. UNDER PLATED OVER ALL.
 - Au PLATED ON THE FUNCTIONAL AREA OF CONTACT.
 - (GOLD PLATING THICKNESS FOLLOW THE P/N)
 - GOLD FLASH PLATING ON SOLDER AREA
 - 2-2.SHELL:
 - Ni 30u" MIN. UNDER PLATED OVER ALL.
- 3.MECHANICAL PERFORMANCE,
 - 3-1.INSERTION FORCE: 0.5~2.0kgf.
 - 3-2.REMOVAL FORCE: 0.8kgf~2.0kgf.
 - 3-3.DURABILITY: 3000 CYCLES.
- 4.ELECTRICAL PERFORMANCE,
 - 4-1. CURRENT RATING: 2.0A
VOLTAGE RATING: 5.0V
 - 4-2.INSULATION RESISTANCE: 100MΩ MIN
 - 4-3.DIELECTRIC WITHSTAND VOLTAGE,AC 100V FOR 1 MINUTE.
 - 4-4.LOW CONTACT RESISTANCE: INITIAL 40MΩ / AFTER 50MΩ
5. ENVIRONMENTAL PERFORMANCE:
 - OPERATING TEMPERATURE: -30°C~+80°C.
- 6.IR REFLOW:
 - THE PEAK TEMPERATURE ON THE BOARD SHALL BE MAINTAINED FOR 10 SECONDS AT 260°C.



SECTION B-B
SCALE 1:1

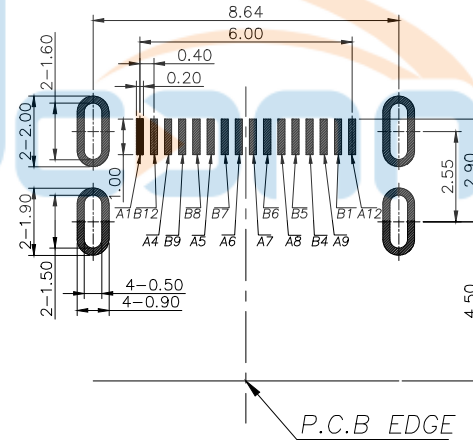
TOLERANCE UNSPECIFIED		深圳市步步精科技有限公司 TITLE: TYPE-C 16P 母座L=7.60 板上型 CH1.62			
.0	±0.35				
.00	±0.25	DRAWN/ DATE		SIZE: A4	
.000	±0.15	HMY		UNIT: MM.	
X.°	±2.00°	CHECKED/ DATE		PART. NO: UC.01.51-11-0018	
CUSTOMER DRAWING		LYX		SCALE: 1:1	
		APPROVED/ DATE		PROJECTION	
		LJP		REV.: 版本	
				DWG. PATH	
				0100-2	
				SHEET: 页码	



USB TYPE-C PIN ASSIGNMENTS

PIN NUMBER	SIGNAL NAME
A1	GND
A4	VBUS
A5	CC1
A6	Dp1
A7	Dn1
A8	SBU1
A9	VBUS
A12	GND

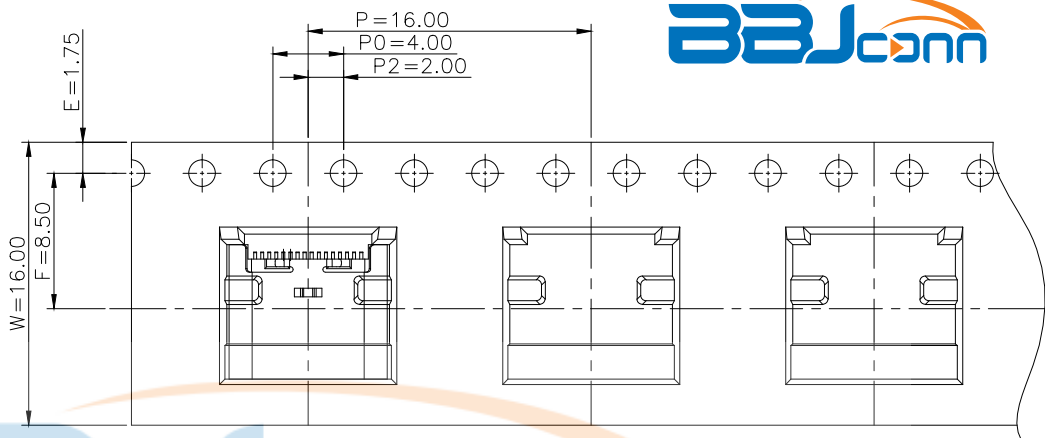
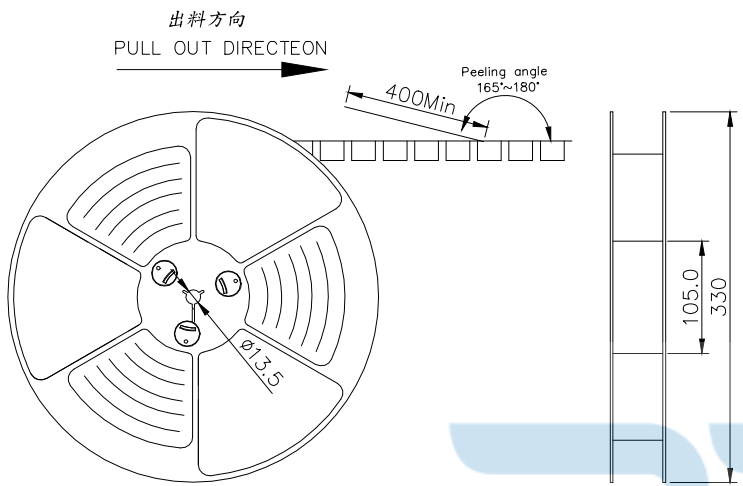
PIN NUMBER	SIGNAL NAME
B12	GND
B9	VBUS
B8	SBU2
B7	Dn2
B6	Dp2
B5	CC2
B4	VBUS
B1	GND



RECOMMEND P.C.B. LAYOUT (COMPONENT SIDE)
TOLERANCE FOR PCB LAYOUT IS ± 0.05

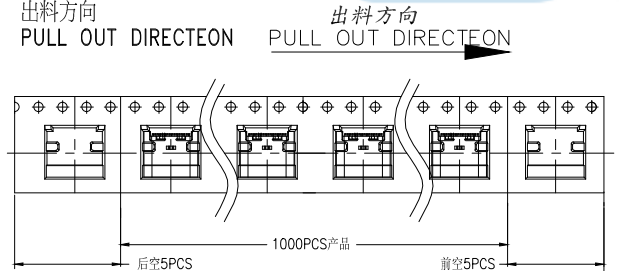


TOLERANCE UNSPECIFIED		深圳市步步精科技有限公司 TITLE: TYPE-C 16P 母座L=7.60 板上型 CH1.62			
.0	± 0.35				
.00	± 0.25	DRAWN/ DATE		SIZE: A4	UNIT: MM.
.000	± 0.15	DATE		PART. NO: UC.01.51-11-0018	
X. °	$\pm 2.00^\circ$	CHECKED/ DATE		SCALE: 1:1	PROJECTION
CUSTOMER DRAWING		DATE		DWG. PATH	REV.: 版本
		APPROVED/ DATE		0100-2	
				SHEET: 页码	



NOTES

1. 帶子引導長度
LEAD TAPE LENGTH
出料方向
PULL OUT DIRECTEON

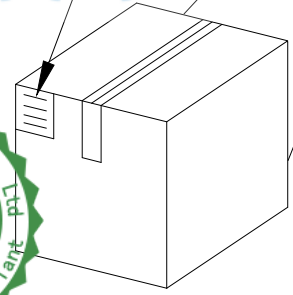
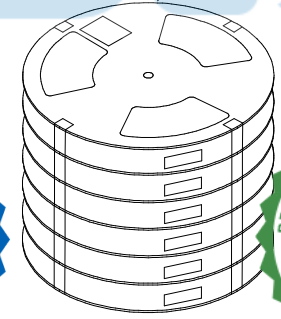


2. 上帶剝力為: 0.1~1.3N(10.2gf~130gf)
PEELING OFF FORCE OF TOP TAPE: 0.1~1.3N(10.2gf~130gf)
出貨運輸過程中一定注意:
THIS REQUIREMENT SHOULD BE APPLIED AT SHIPMENT:
卷帶在運輸過程中不能散開
PEELING OFF SHOULD NOT BE ALLOWED DURING TRANSPORTATION

TAPE & REEL 14 PCS
1 REEL = 1000 PCS

BOX
DIMENSIONS:
33.5X33.5X30.5

1 CARTON
=14 REELS
=14000 PCS



TOLERANCE UNSPECIFIED	
.0	±0.35
.00	±0.25
.000	±0.15
X.°	±2.00°
CUSTOMER DRAWING	

深圳市步步精科技有限公司

TITLE: TYPE-C 16P 母座L=7.60 板上型 CH1.62

DRAWN/ DATE	HMY	SIZE: A4	UNIT: MM.	PART. NO:	UC.01.51-11-0018	
CHECKED/ DATE	LYX	SCALE: 1:1	PROJECTION			REV.: 版本
APPROVED/ DATE	LJP	DWG. PATH	0100-2	SHEET: 页码		

包裝明細表 (The detail of the packing)

產品料號 (Product No.)	包裝容量 (Packing Capacity)			重量 Weight (Kg)		
	pcs/box	boxs/Carton	Pcs/Box	N.W./Pcs	N.W./Box	G.W./Box
	1000	14	14000	---	---	---