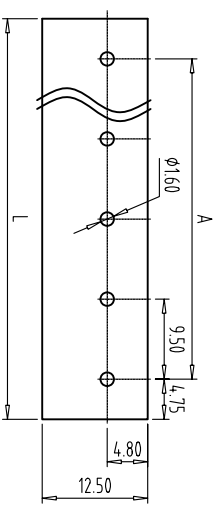
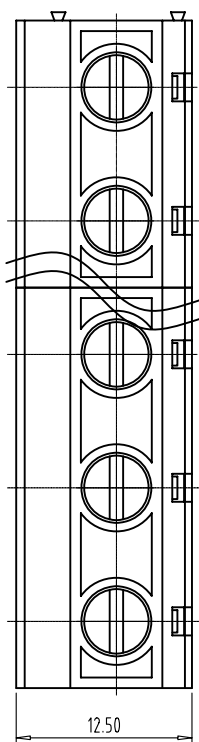


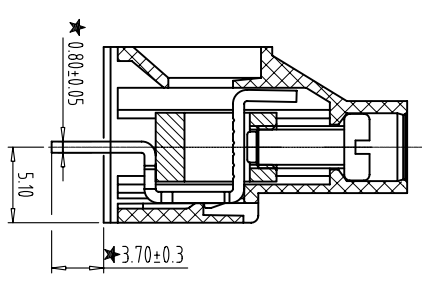
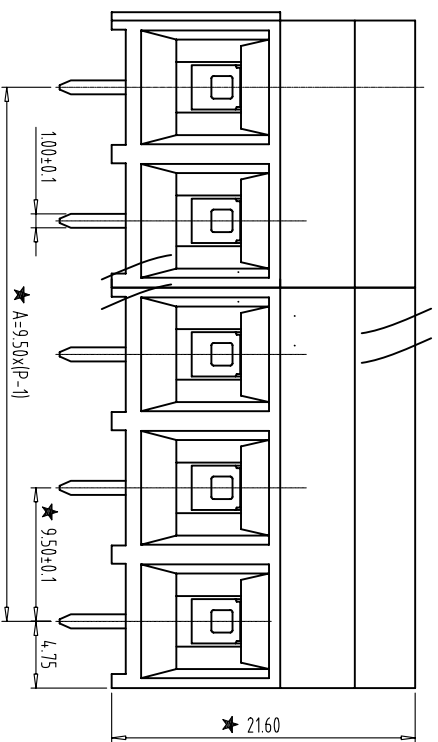
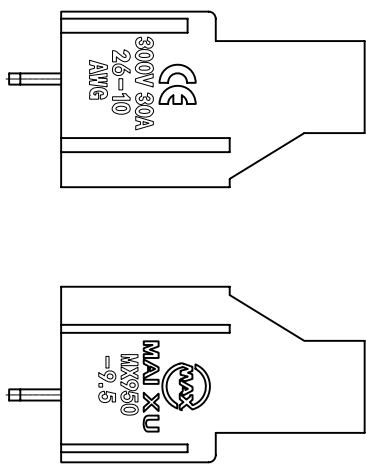
REVISIONS				
ZONE	REV	DESCRIPTION	DATE	APPROVED



PCB LAYOUT
S=1.2:1



- NOTES:
1. Rating:300V 30A;
 2. Insulation Withstands Voltage: AC2000V/MIN
 3. Insulation Resistance: 500MΩ or more at DC500V
 4. Using Temperature Range: -40°C/+105°C
 5. Screw Torque Value:0.5Nm
 6. Suitable Electric Wire: 10-26AWG
 7. "★" the important dimension.



Total Pitch Tolerances

Nominal dimension range

over	0	30	53	70	90	115	150	250	350	500	over	0	30	53	70	90	115	150	200	250	320	over	0	10	10	all	100	100	150	
to	to	to	to	to	to	to	to	to	to	to	to	to	to	to	to	to	to	to	to	to	to	to	to	to	to	to	to	to	to	to
±0.18	±0.20	±0.25	±0.3	±0.35	±0.44	±0.60	±0.70	±0.85	±0.20	±0.25	±0.30	±0.35	±0.44	±0.55	±0.70	±0.80	±0.90	0.2	0.3	0.3	0.2	0.3	0.5	0.5	0.5	0.5	0.5	0.5	0.5	



THIRD ANGLE PROJECTION

CHKD: /

DRFT: /

SIZE FSQM NO. DWG NO.

MX950-9.5-XXP-XC

MAXU 慈溪市迈旭电子有限公司
Cixi Maixu Electronics Co., Ltd.

REV

MM (INCH) DO NOT SCALE DRAWING SHEET