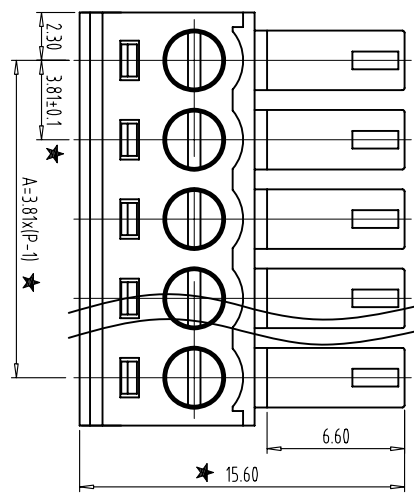
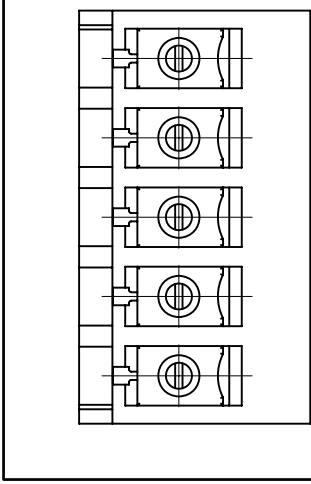
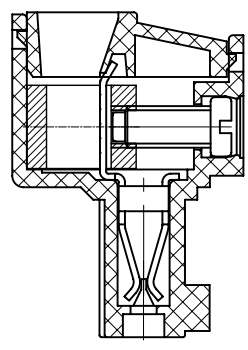
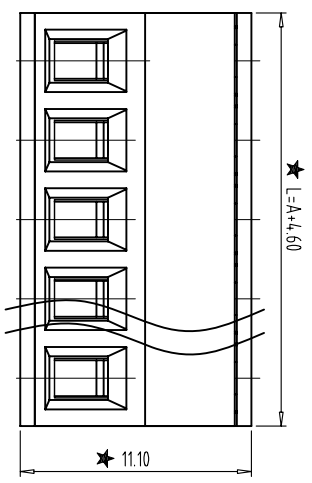
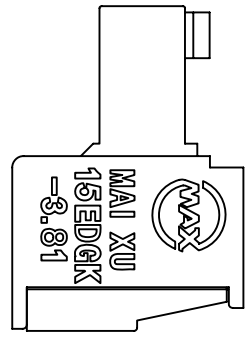
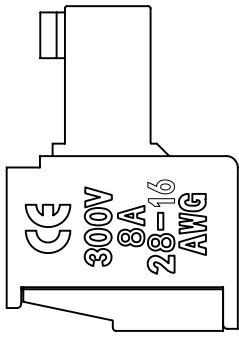


REVISIONS				
ZONE	REV	DESCRIPTION	DATE	APPROVED

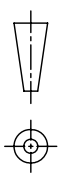


- NOTES:
- 1.Rating:300V 8A ;
 - 2.Insulation Withstands Voltage: AC2000V/MIN
 - 3.Insulation Resistance: 500MΩ or more at DC500V
 - 4.Using Temperature Range:-40°C---+105°C
 - 5.Screw Torque Vlaue: 1.7 lbf.in
 - 6.Suitable Electric Wire:28-16AWG
 - 7."★" is the important dimension.



Total Pitch Tolerances											
over	0	30	53	70	90	115	150	250	350	500	
over	to	to	to	to	to	to	to	to	to	to	to
±0.18	±0.20	±0.25	±0.3	±0.35	±0.44	±0.60	±0.70	±0.85	±0.20	±0.25	±0.30

Nominal dimension range											
over	0	30	53	70	90	115	150	200	250	320	
over	to	to	to	to	to	to	to	to	to	to	to
	0	10	all	0	100	150					
	0.2	0.3	0.3	0.2	0.3	0.5					



THIRD ANGLE PROJECTION

MX15EDGK-3.81-XXP-XC

MAIXU 慈溪市迈旭电子有限公司
Cixi Maixu Electronics Co., Ltd.

CHKD:	/	SIZE	FSCM NO.	DWG NO.	REV
DRFT:	/	MM (INCH)	DO NOT SCALE DRAWING	SHEET	