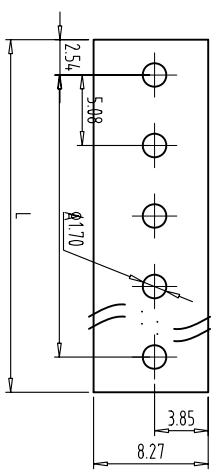
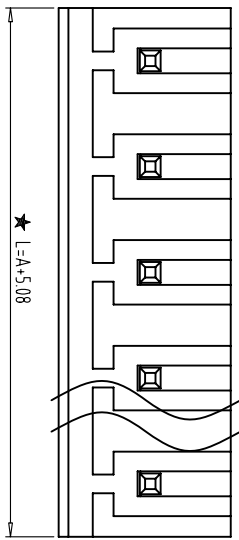


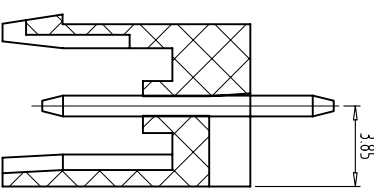
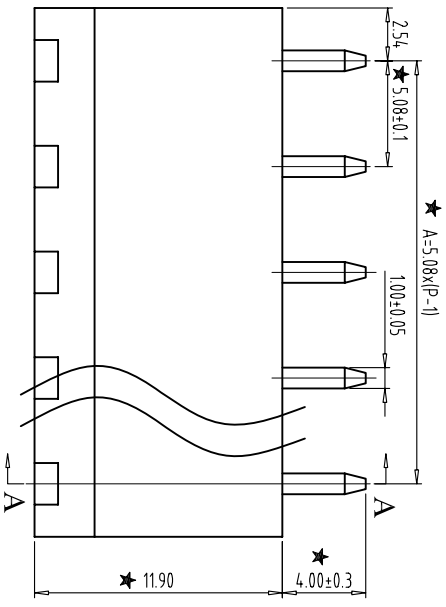
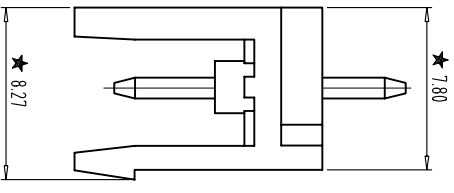
REVISIONS		
ZONE	REV	DESCRIPTION



PCB LAYOUT
S=2:1



- NOTES:
1. Rating:300V 15A ;
 2. Insulation Withstands Voltage: AC2000V/MIN
 3. Insulation Resistance: 500MΩ or more at DC500V
 4. Using Temperature Range: -40°C~+105°C
 5. "★" is the important dimension
 6. RoHS compliance



SECTION:A-A

Total Pitch Tolerances												Nominal dimension range											
over	0	30	53	70	90	115	150	250	350	500	780	over	0	30	53	70	90	115	150	200	250	320	
to	to	to	to	to	to	to	to	to	to	to	to	to	to	to	to	to	to	to	to	to	to	to	
±0.18	±0.20	±0.25	±0.3	±0.35	±0.44	±0.60	±0.70	±0.85	±0.20	±0.25	±0.30	±0.35	±0.44	±0.55	±0.70	±0.80	±0.90	0.2	0.3	0.3	0.2	0.3	0.5



THIRD ANGLE PROJECTION

CHKD: /

DRFT: /

MAIXU 慈溪市迈旭电子有限公司
Cixi Maixu Electronics Co., Ltd.

MX2EDGV-5.08-XXP-XC

SIZE	FSQM NO.	DWG NO.	REV
MM (INCH)			

DO NOT SCALE DRAWING SHEET