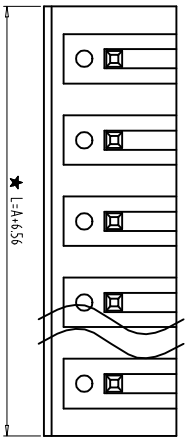
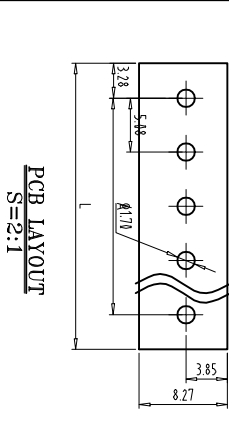
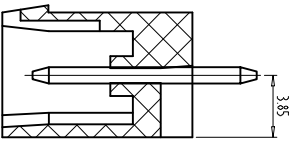
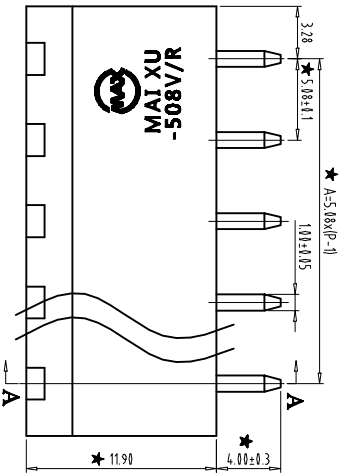
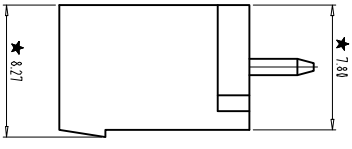


FILE: ZB02/

REVISIONS			DATE	APPROVED
ZONE	REV	DESCRIPTION		



- NOTES:
1. Rating 300V 15A ;
 2. Insulation Withstands Voltage: AC2000V/MIN
 3. Insulation Resistance: 500MΩ or more at DC500V
 4. Using Temperature Range: -40°C~+105°C
 5. "★" is the important dimension
 6. RoHS compliance



SECTION:A-A

Total Pitch Tolerances		Nominal dimension range	
0	over	0	over
30	to	30	to
53	to	53	to
70	to	70	to
98	to	98	to
115	to	115	to
150	to	150	to
250	to	250	to
350	to	350	to
500	to	500	to
30	to	30	to
53	to	53	to
70	to	70	to
98	to	98	to
115	to	115	to
150	to	150	to
250	to	250	to
350	to	350	to
500	to	500	to
0.18	to	0.18	to
0.20	to	0.20	to
0.25	to	0.25	to
0.3	to	0.3	to
0.35	to	0.35	to
0.44	to	0.44	to
0.60	to	0.60	to
0.70	to	0.70	to
0.85	to	0.85	to
1.20	to	1.20	to
1.25	to	1.25	to
1.30	to	1.30	to
1.35	to	1.35	to
1.44	to	1.44	to
1.55	to	1.55	to
1.70	to	1.70	to
1.80	to	1.80	to
1.90	to	1.90	to
0.2	to	0.2	to
0.3	to	0.3	to
0.3	to	0.3	to
0.2	to	0.2	to
0.3	to	0.3	to
0.3	to	0.3	to
0.5	to	0.5	to

THIRD ANGLE PROJECTION

慈溪市迈旭电子有限公司
MAIXU Cixi Maixu Electronics Co., Ltd.

MX2EDG-5.08VC

SIZE	FSCM NO.	DWG NO.	REV
MM (INCH)			

DO NOT SCALE DRAWING SHEET